



DFCS Newsletter

"Shining For Jesus, Lighting The Way"

September 19

- Before Care
7:40-8:00
- MAP Testing
- After Care
3:30-4:00

September 20

- Before Care
7:40-8:00
- MAP Testing
- After Care
3:30-4:00
- Sub forms and
money due

September 21

- Before Care
7:40-8:00
- MAP Testing
- After Care
3:30-4:00
- Sub Day- \$5.00

September 22

- Before
Care
7:40-8:00
- MAP
Testing
- After Care
3:30-4:00

September 23

- Before Care
7:40-8:00
- No After Care
- Pizza Day-
\$1.50/slice
- \$1 for Dress Down
- Friday Dismissal
at 1:15 pm

Salisbury Zoo Field Trip

On **Tuesday, October 4th**, we will be taking a field trip to the Salisbury Zoo! This trip will help to go along with what we are learning in our science units. Your child will need to bring a sack lunch from home. Please make sure that it's in a disposable bag with their name on the outside.

We will be leaving school at 9:00. The cost is \$2 per child to cover our bus fee (the zoo does have free admission). Parents are welcome to meet us at the zoo. Pre-K and K students must be accompanied by their parent on the trip.

Please fill out the permission slip and return it by Tuesday, September 27. Thank you!



Family Movie Night

DFCS will be having our first Movie Night of the year **tomorrow, September 17th at 7:30PM**. We will be watching the movie "Homeward Bound." Also during the event our Student Council members will be selling cookies and ice cream to raise money for new playground balls. We hope that you will join us for a fun night!

MAP Testing

Throughout next week will be continuing with our first round of MAP testing for the year. These are tests given to our students in grades K-8. Students will complete these tests 3 times throughout the year. Please make sure students get a good night's rest and a big breakfast on our testing days. This will help with brain power! Thank you for your support!





DFCS Newsletter

"Shining For Jesus, Lighting The Way"



We will be ordering our tickets this week, so please tell Mrs. Calhoun how many tickets your family will need as soon as possible.

Sight and Sound

Sight and Sound Field Trip

On December 14th DFCS will be taking our annual trip to Sight & Sound. This year the story is the story of David.

What is Sight and Sound?

Sight & Sound Theatres is an entertainment company that produces Bible stories live on stage. Based in Lancaster County, Pennsylvania.

Where can I find more information about Sight and Sound?

https://www.sight-sound.com/ticketing/shows/title?location=STRASBURG_PA

Price per Ticket

Per Adult (12 & up): \$69.00
Per Child (under 12): \$39.00

Do I need to pay for my students?

DFCS students will be raising money to pay for their ticket through our Bike, Walk, Run Fundraiser.

Can Family Members tag along?

Yes, all family members are welcome.

Where is Sight and Sound Located?

It is located in Lancaster, PA. We will be driving out to the field trip and will need help transporting students.

Are students in Pre-K and K able to attend the field trip?

Yes, however, they must be accompanied by a parent.

What if my Pre-k and K don't have a parent to go?

These students will need to stay home.

DFCS Reading Challenge

2022-2023

Goal: 4 chapter books or 10 picture books a month

Monthly Theme Suggestions

August- books about important people (2 books or 5 picture books since we only attend school for half of the month)

September- books about different places

October- books about animals

November- books that will help you learn more about God

December- books that have won the Caldecott award

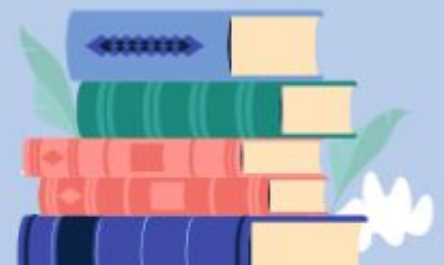
January- books recommended by friends

February- books about nature or the environment

March- books about different countries

April- books about a different time

May- books your family members enjoyed when they were your age





Bike, Walk, Run Fundraiser

Our annual Bike, Walk, Run Fundraiser will be at Brecknock Park on Friday, October 7th. This year the money raised from this event will go towards the students' tickets for our Sight and Sound field trip.

During this event students will bike, walk, or run laps around Brecknock Park. Each lap is about 1 mile. Students can ask for sponsors for each lap that they complete, or accept a donation as a flat rate.

After our event we will be eating lunch at the park. Since it is Friday, students can either bring a sack lunch from home or they can order pizza. Pre-K and K students must be accompanied by a parent to attend the field trip.

We will need the permission slip to be signed and returned in order for the students to go to Brecknock Park.

Please collect donated cash or checks (made payable to DFCS) for the fundraiser and turn them into the school by Wednesday, October 5. Thank you!

A Look Ahead

September

- 12-23 MAP Testing
- 17 Movie Night
- 26-30 Week of Prayer

October

- 4 Salisbury Zoo Field Trip
- 7 Bike, Walk, Run Fundraiser
- 10 Indigenous People Day (no school)
- 13 STEM Showcase
- 11-14 Fire Prevention Week
- 14 End of 1st Qtr. (43)
- 15 Movie Night
- 21 Report Cards
- 26 Staff Develop.
- (min. day)- 12:30 Dismissal

Useful Links on Our Website

www.doverfcs.org

[Class Dojo](#)  **ClassDojo**

[Online Payment Portal](#)

[PFE Website](#)

